

# SUBTRACT MONEY



**GET READY**



- 1) Ron has these coins. He spends 52p.  
How much does he have left?



- 2) What is £1 subtract 20p?
- 3) What is £1 subtract 25p?
- 4) Complete the additions to make £1 each time

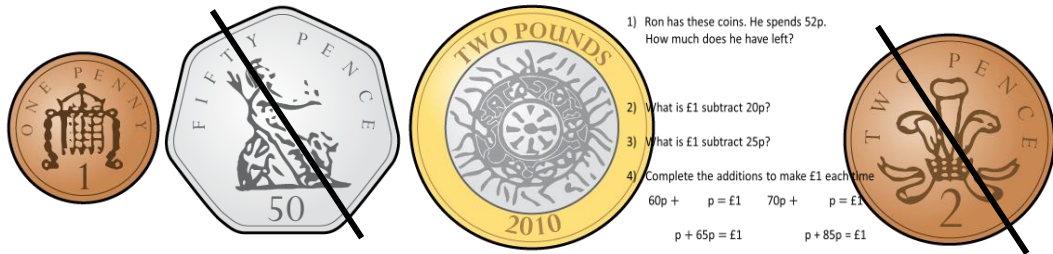
$$60\text{p} + \boxed{\phantom{00}}\text{p} = \text{£}1$$

$$70\text{p} + \boxed{\phantom{00}}\text{p} = \text{£}1$$

$$\boxed{\phantom{00}}\text{p} + 65\text{p} = \text{£}1$$

$$\boxed{\phantom{00}}\text{p} + 85\text{p} = \text{£}1$$

- 1) Ron has these coins. He spends 52p.  
How much does he have left?



1) Ron has these coins. He spends 52p.  
How much does he have left?

2) What is £1 subtract 20p?

3) What is £1 subtract 25p?

4) Complete the additions to make £1 each time

$60p + \quad p = £1$      $70p + \quad p = £1$

$p + 65p = £1$      $p + 85p = £1$

£2 and 21p

- 2) What is £1 subtract 20p? 80p

- 3) What is £1 subtract 25p? 75p

- 4) Complete the additions to make £1 each time

$$60p + \boxed{40} p = £1$$

$$70p + \boxed{30} p = £1$$

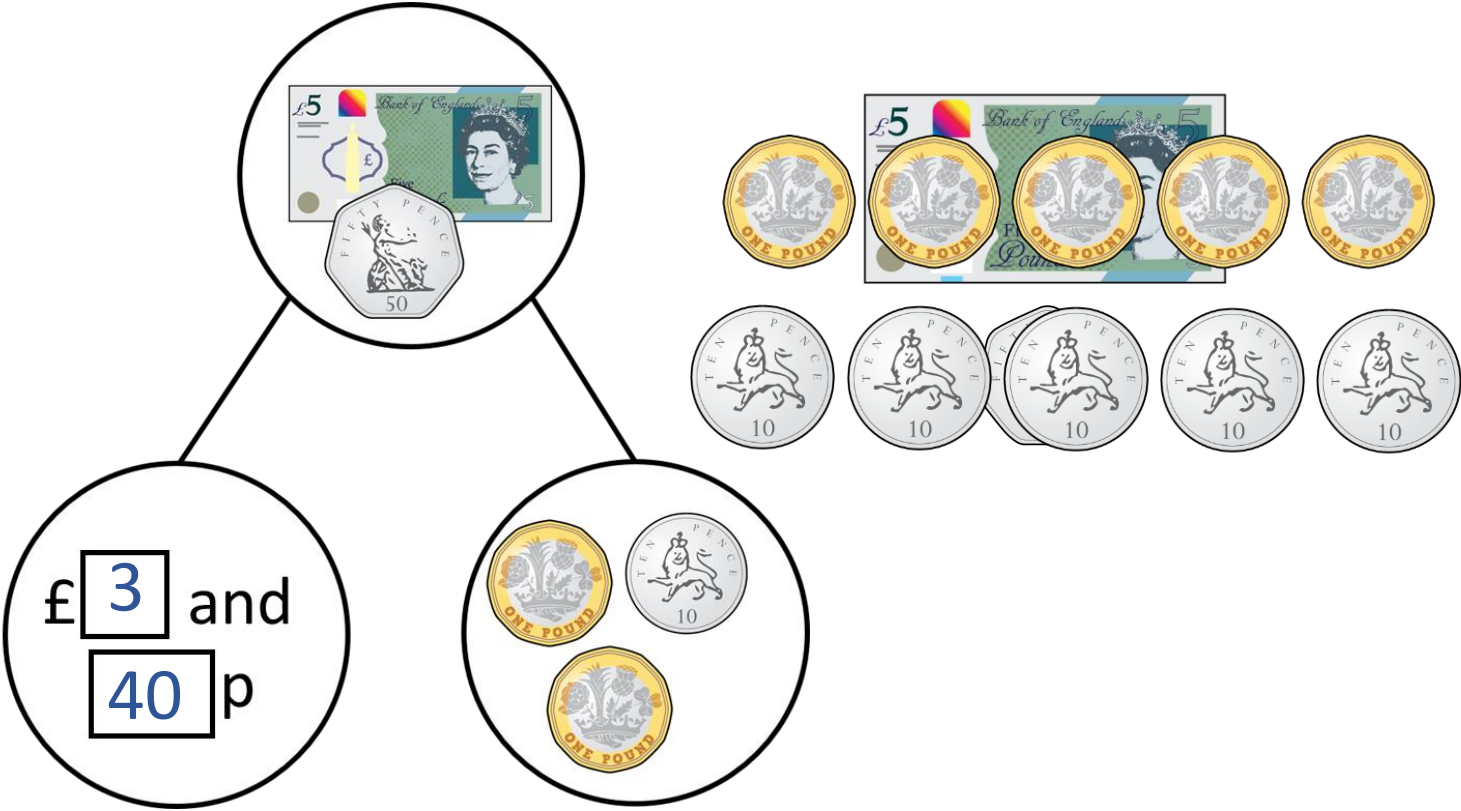
$$\boxed{35} p + 65p = £1$$

$$\boxed{15} p + 85p = £1$$

LET'S LEARN



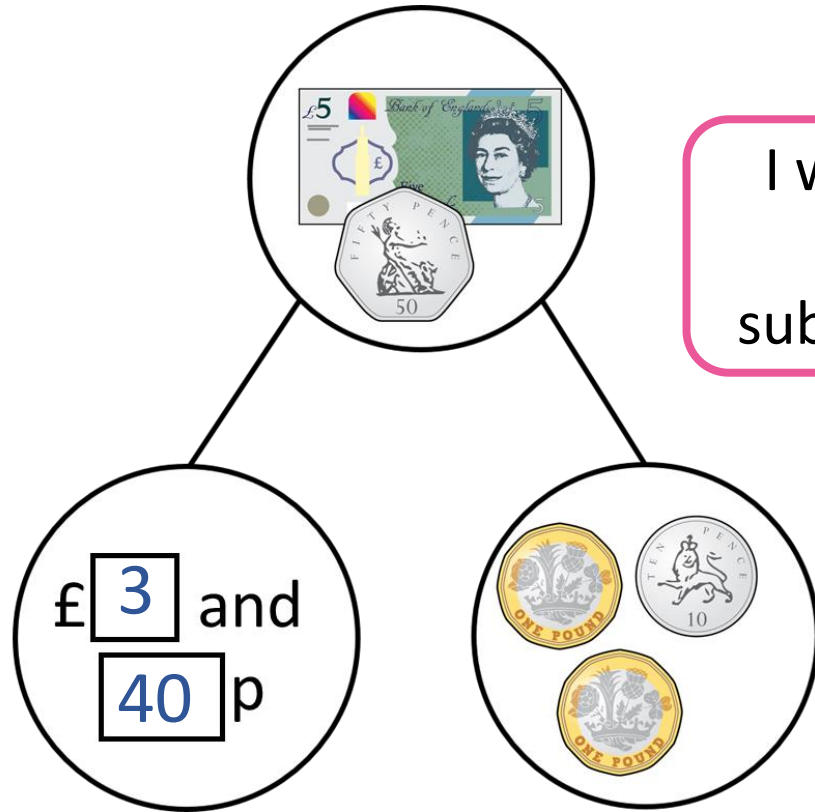
# Complete the part-whole model.



I will exchange the  
£5 and 50p



# Complete the part-whole model.



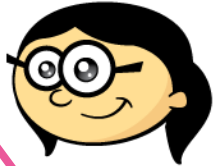
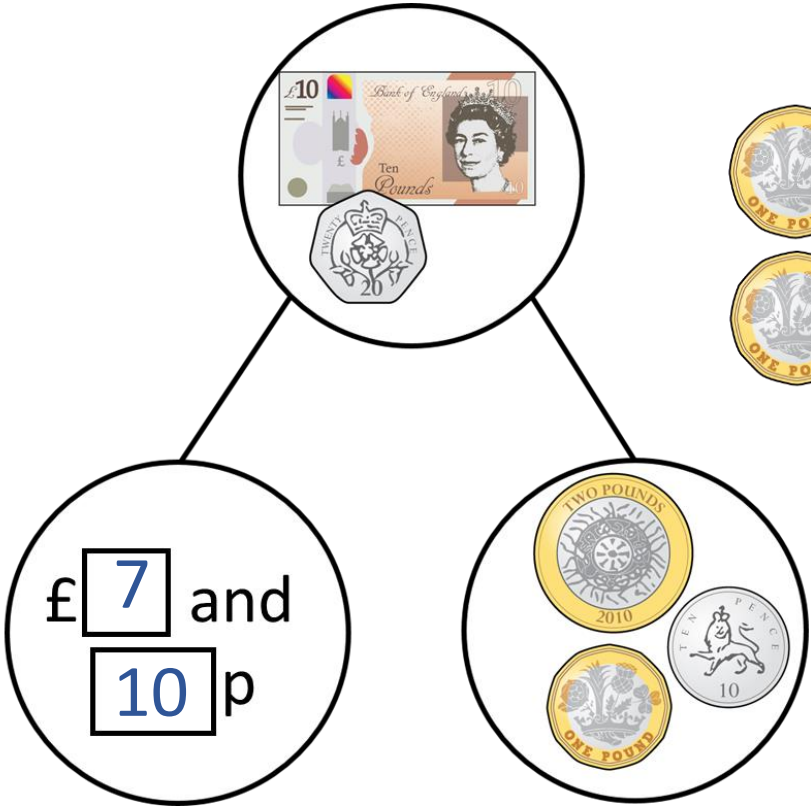
I will subtract the pounds then subtract the pence.



$$£5 \text{ and } 50\text{p} - £2 = £3 \text{ and } 50\text{p}$$

$$£3 \text{ and } 50\text{p} - 10\text{p} = £3 \text{ and } 40\text{p}$$

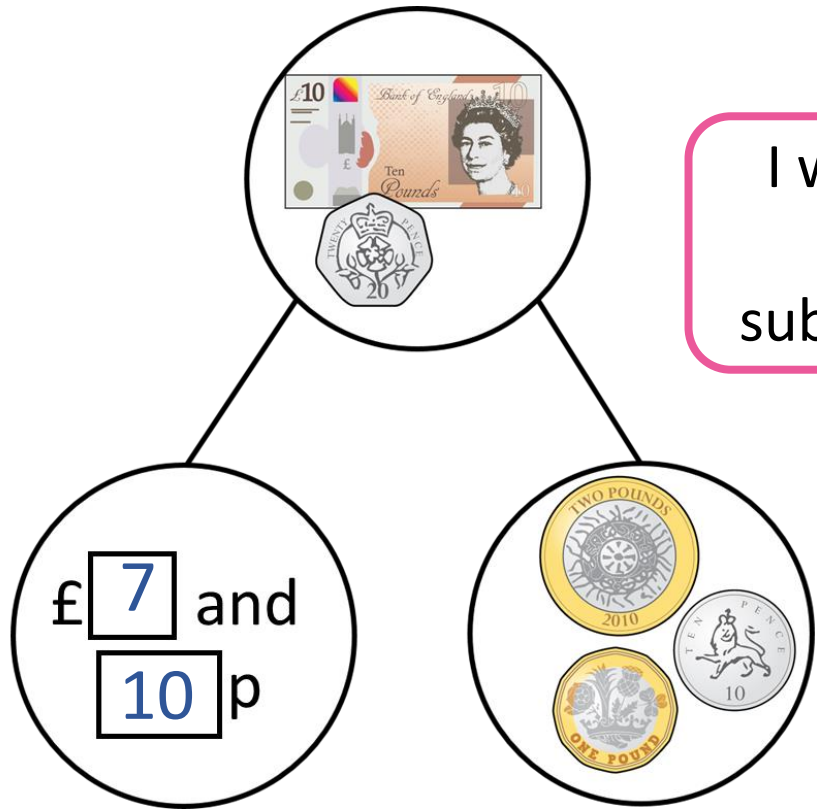
# Complete the part-whole model.



I will exchange the  
£10 and 20p



# Complete the part-whole model.

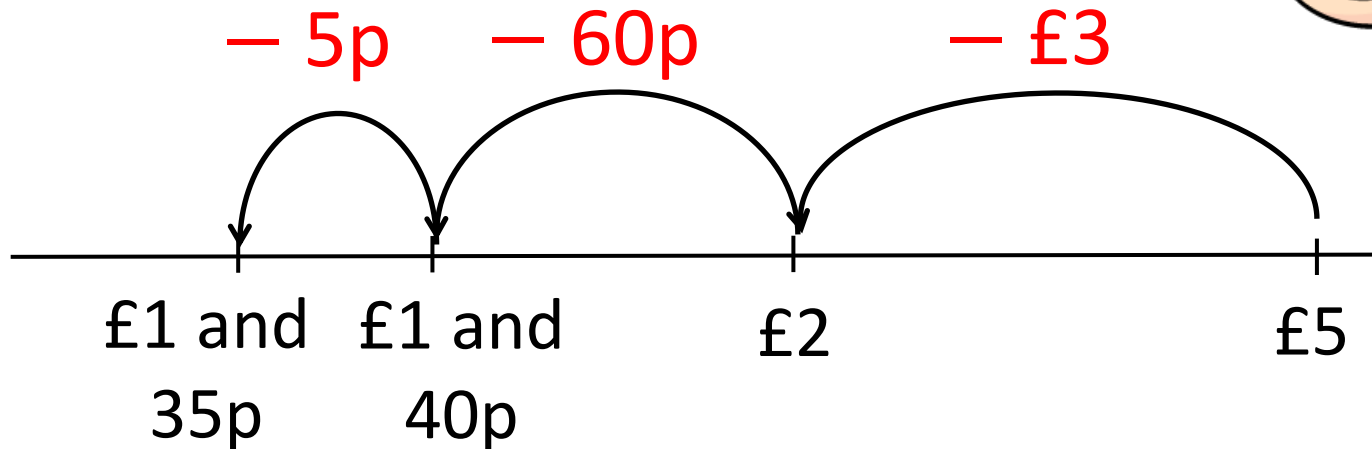


I will subtract the pounds then subtract the pence.



$$\begin{aligned} & \text{£}10 \text{ and } 20\text{p} - \text{£}3 = \text{£}7 \text{ and } 20\text{p} \\ & \text{£}7 \text{ and } 20\text{p} - 10\text{p} = \text{£}7 \text{ and } 10\text{p} \end{aligned}$$

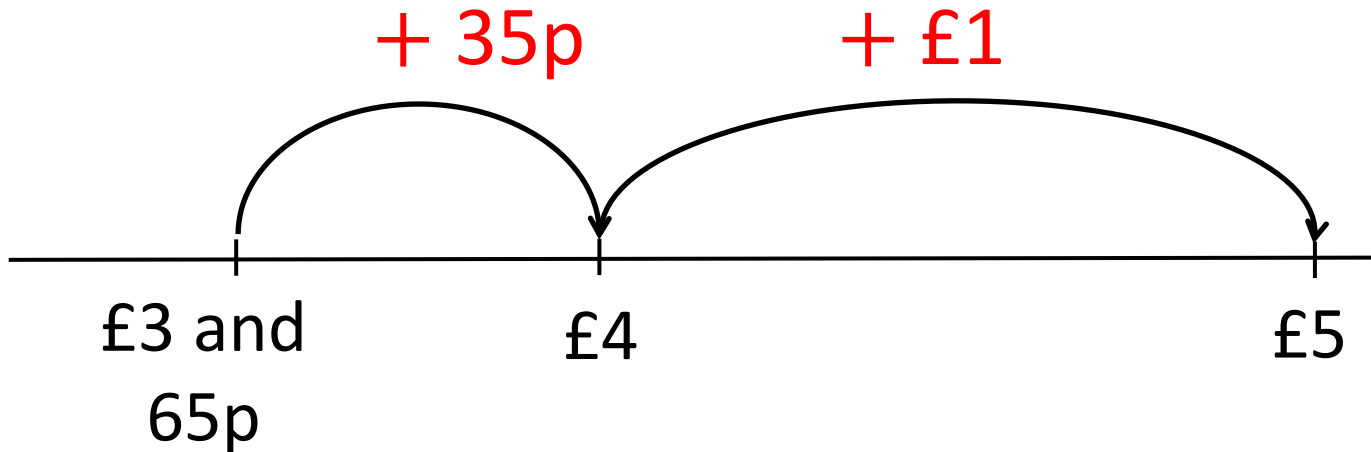
Ron is using a number line to subtract £3 and 65p from £5



$$£5 - £3 \text{ and } 65p = £1 \text{ and } 35p$$

£5 – £3 and 65p

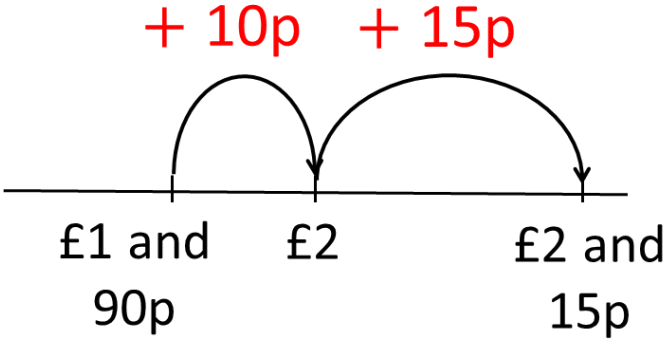
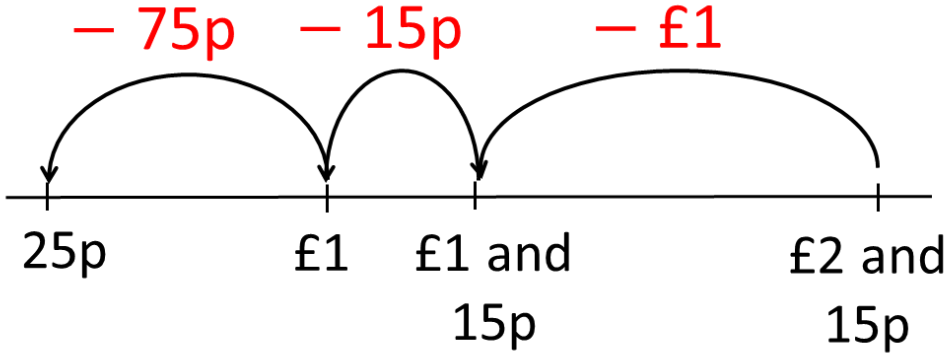
I can count up to  
find the difference



The difference is £1 and 35p

Complete the bar model.

|            |     |
|------------|-----|
| £2 and 15p |     |
| £1 and 90p | 25p |



|            |     |
|------------|-----|
| £5 and 30p |     |
| £4 and 85p | 45p |

When the whole amount and the known part have a small difference, it is usually easier to count up.

|            |            |
|------------|------------|
| £5 and 30p |            |
| 45p        | £4 and 85p |

When the whole amount and the known part have a large difference, it is usually easier to takeaway the part we know.