

Morning maths warm-up

$30 \div 10 =$

$50 \div 10 =$

$10 \div 10 =$

$20 \div 10 =$

$80 \div 10 =$

$40 \div 10 =$

$60 \div 10 =$

$0 \div 10 =$

$70 \div 10 =$

$90 \div 10 =$

Aim

- To draw hands on a clock to show the time to 5 minutes.

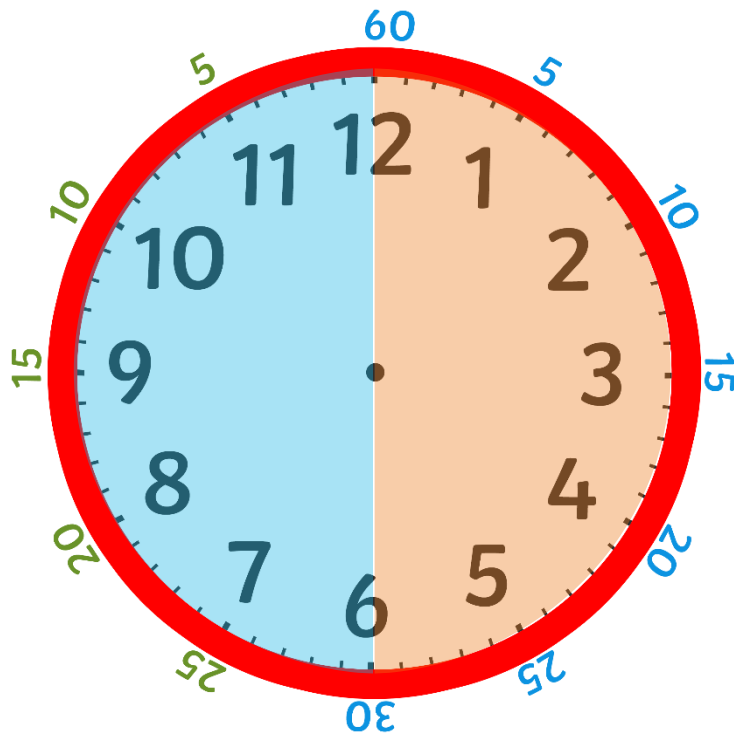
Success Criteria

- I can count in 5 minute intervals around a clock face.
- I can count clockwise or anticlockwise on a clock to find 'to' and 'past' times.
- I can draw a long hand to represent the minutes a short hand to represent the hour.

To or Past?

Remember, when the minute hand passes 'half past', the time stops being 'minutes past' and becomes 'minutes to'.

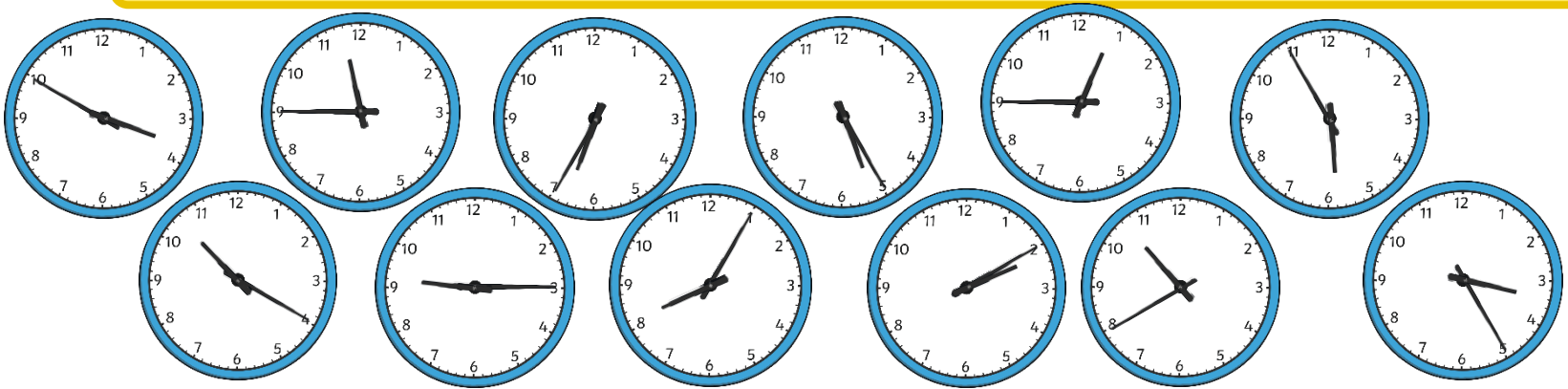
minutes to



minutes past

To or Past?

Can you read and sort these times into 'minutes past' and 'minutes to' times?



Minutes **to** the hour

Minutes **past** the hour

Blank area for sorting 'Minutes to the hour' times.

Blank area for sorting 'Minutes past the hour' times.

Drawing Hands

Remember, the small hand on a clock tells us what hour it is. We call this the **hour hand**.

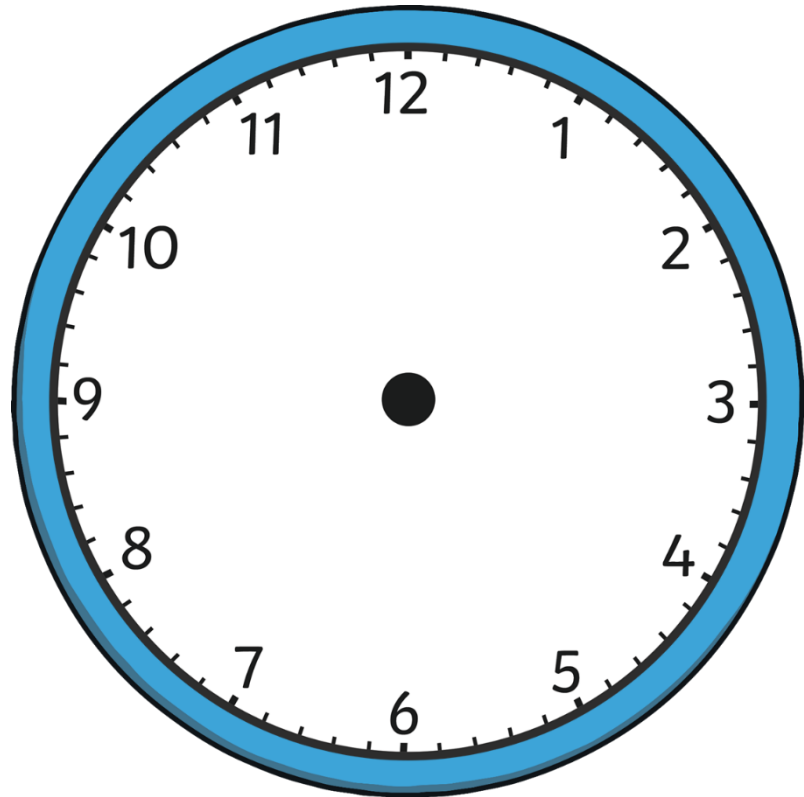
The big hand on a clock tells us what minute it is. We call this the **minute hand**.



hour hand



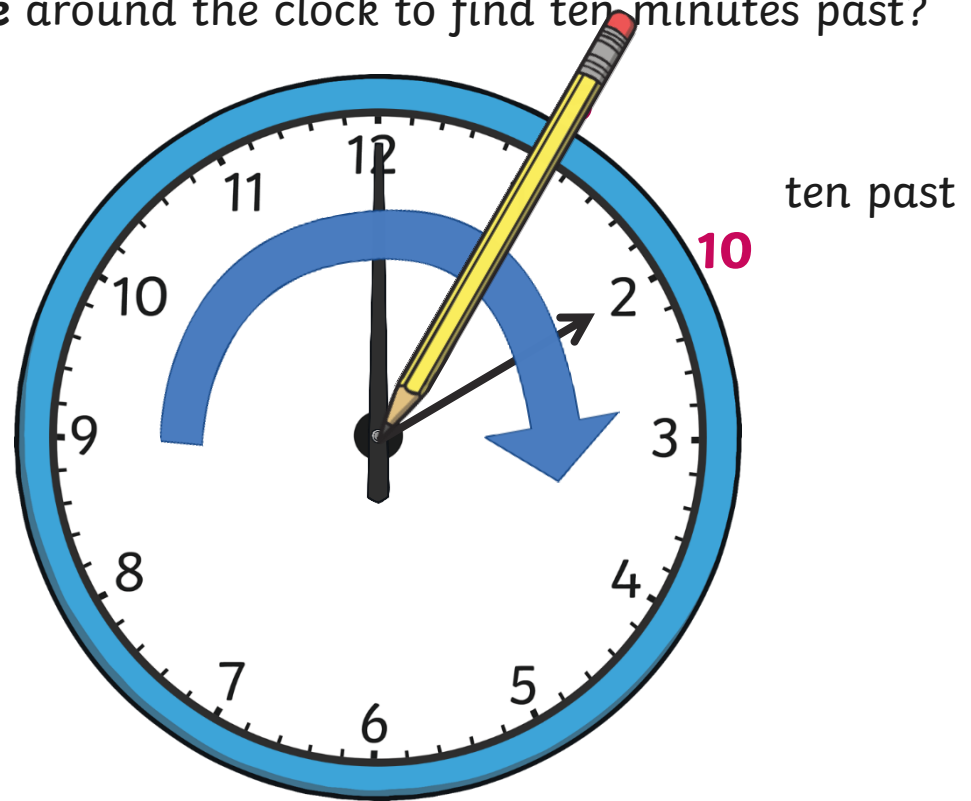
minute hand



Drawing Hands

If I want to show **ten past 4**, I can start by drawing the minute hand.

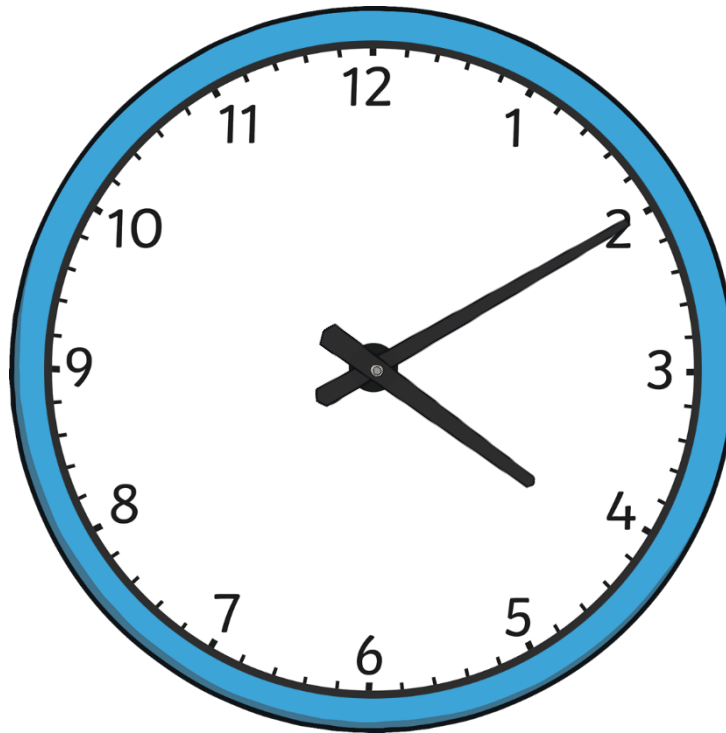
Can you help count **clockwise** around the clock to find ten minutes past?



Drawing Hands

Once I have drawn the minute hand, I can draw the hour hand.
Remember, this is the **short hand**.

I know it is ten past 4 so the hour hand will be pointing **past** the 4.



Independent Work

RED GROUP

LO: I can draw the hands on a clock to show the time to 5 minutes.

I worked independently

I needed some support

I needed a lot of support

Success Criteria

I can count clockwise or anticlockwise on a clock to find 'to' and 'past' times.

I can draw a long hand to represent the minutes and a short hand to

YELLOW GROUP

LO: I can draw the hands on a clock to show the time to 5 minutes.

I worked independently

I needed some support

I needed a lot of support

Success Criteria

I can count clockwise or anticlockwise on a clock to find 'to' and 'past' times.

I can draw a long hand to represent the minutes and a short hand to

GREEN GROUP

LO: I can draw the hands on a clock to show the time to 5 minutes.

I worked independently

I needed some support

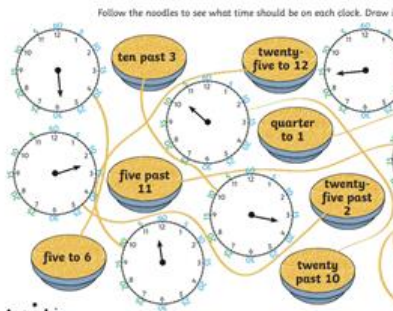
I needed a lot of support

Success Criteria

I can count clockwise or anticlockwise on a clock to find 'to' and 'past' times.

I can draw a long hand to represent the minutes and a short hand to represent the hour.

4th February



Draw the minute and hour hand on the clock to show these times. Use a ruler.

