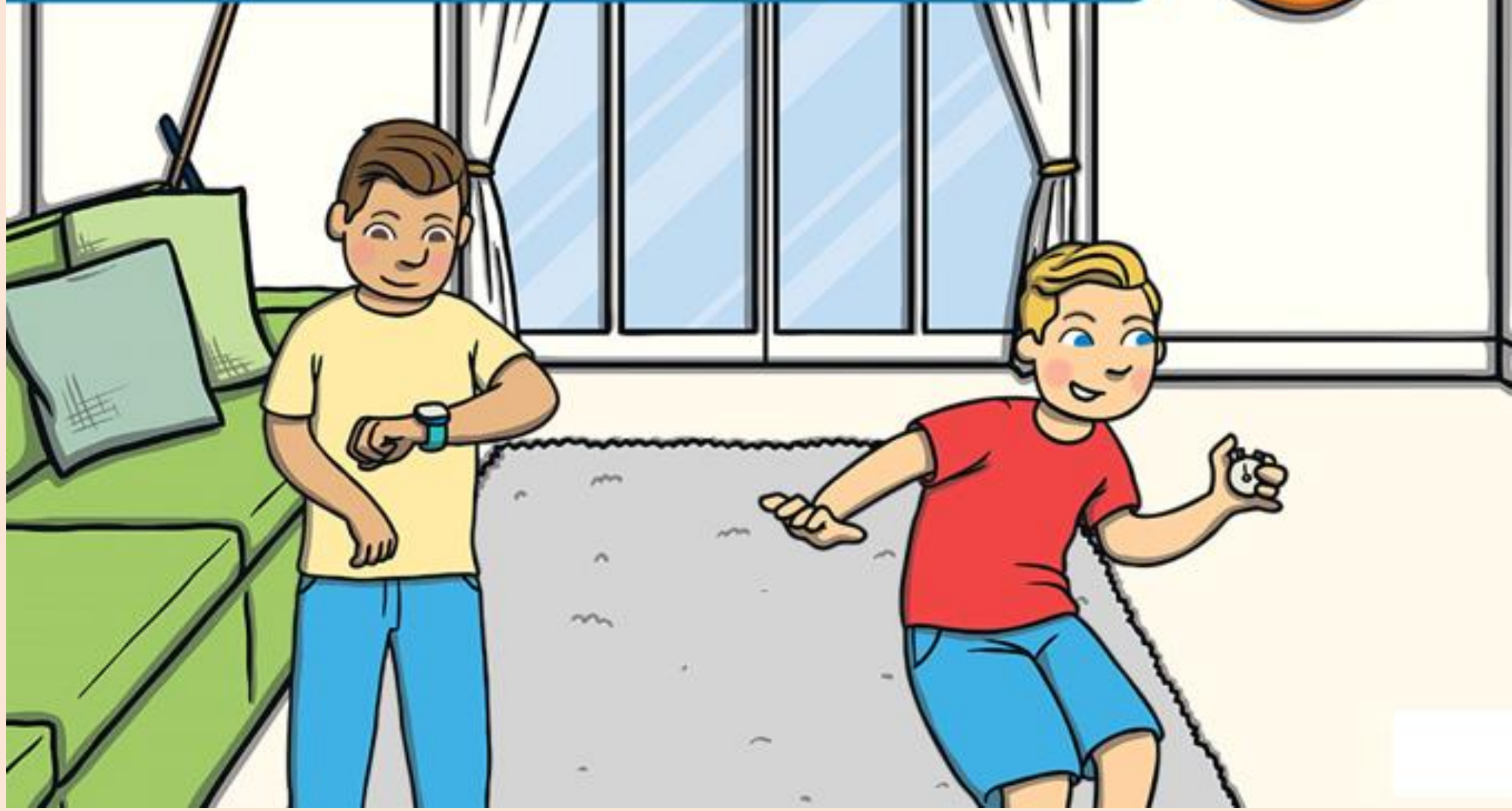


Friday - Maths

This half term we are recapping all of things we have learnt in Class R, each day there will be a new activity.

Friday – Time

Telling the Time



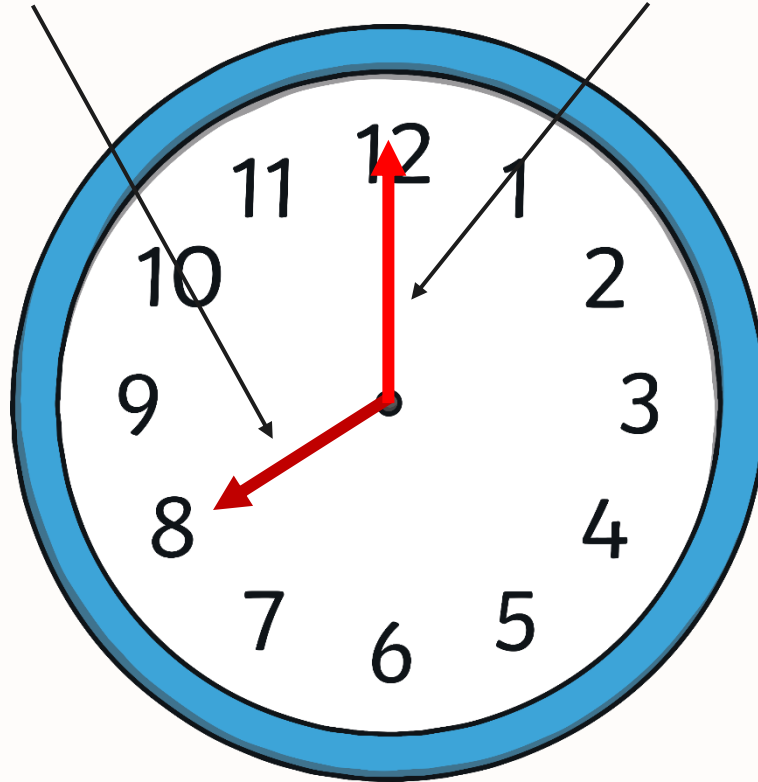
Hours and Minutes

This is the **hour** hand.

This is the **minute** hand.

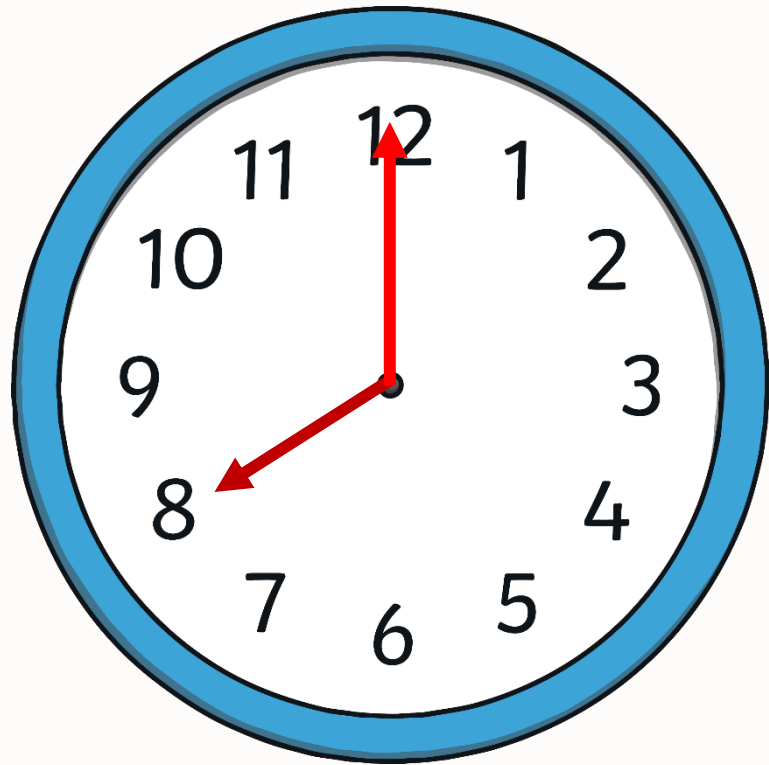
It is the shortest hand on the clock.

It is longer than the hour hand.



Hours and Minutes

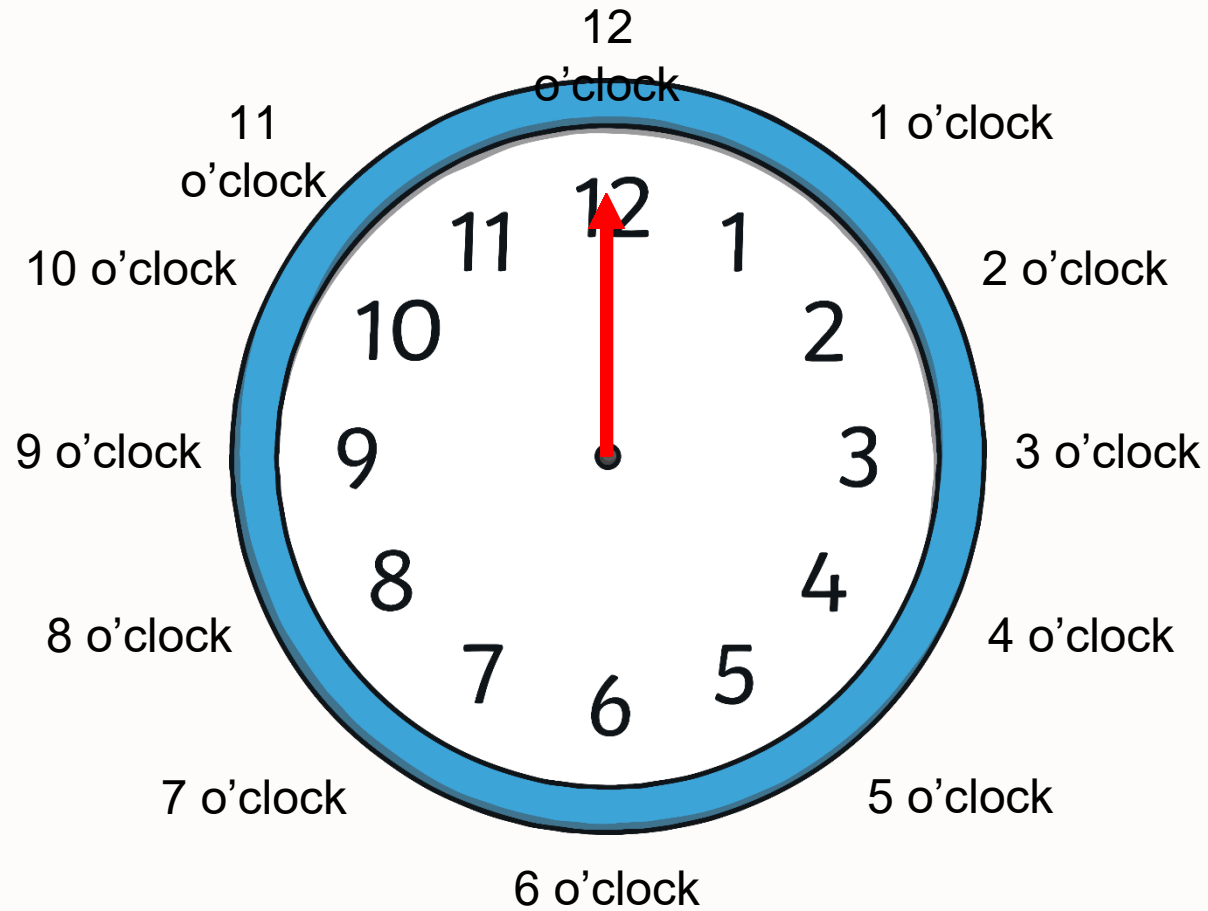
When the minute hand is pointing to 12, it is showing a full hour. We call this time '**o'clock**'.



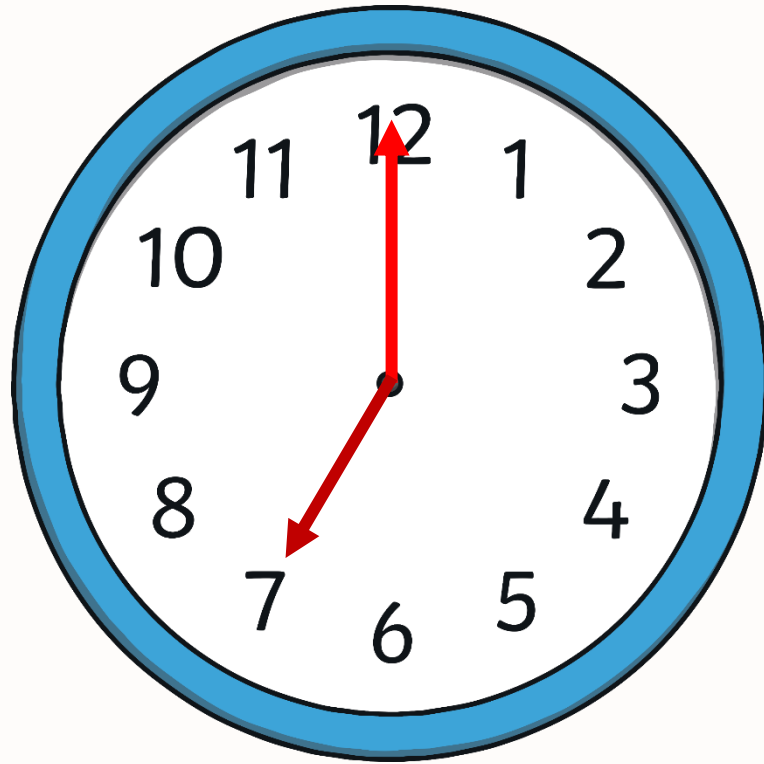
On this clock, the hour hand is pointing at the 8 and the minute hand is pointing to the 12.

This clock is showing that the time is **8 o'clock**.

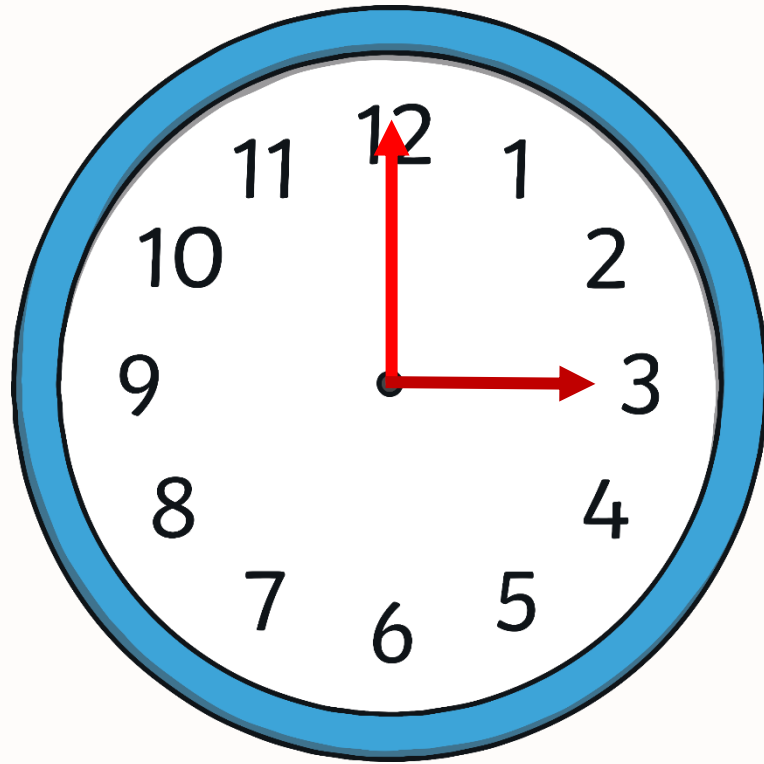
What Time Is It?



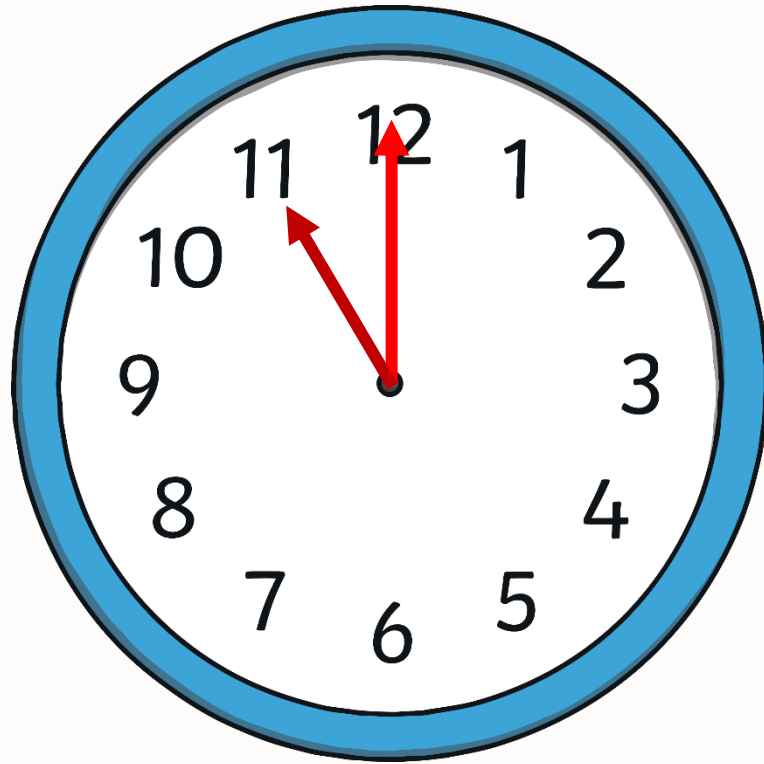
What Time Is It?



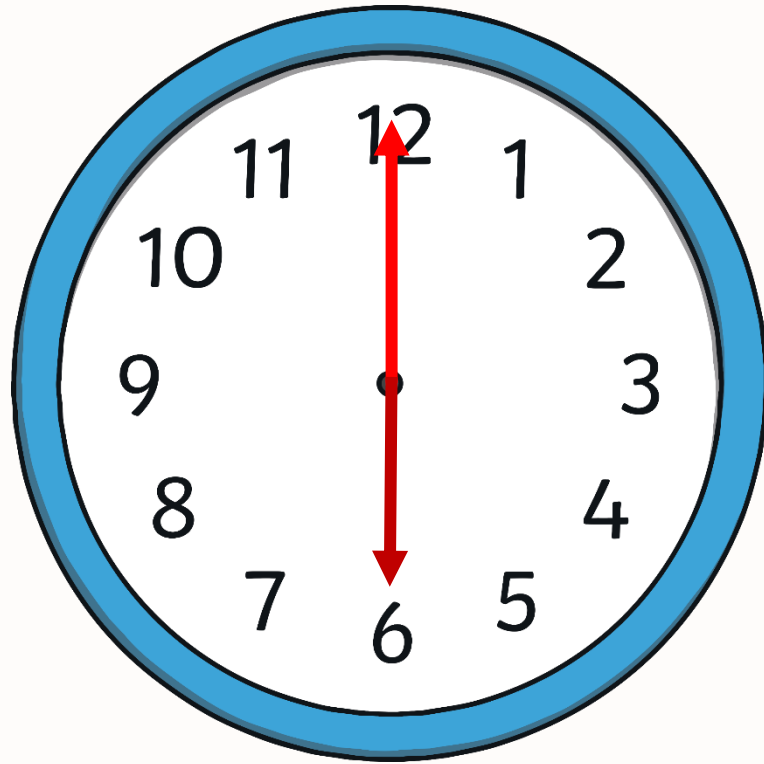
What Time Is It?



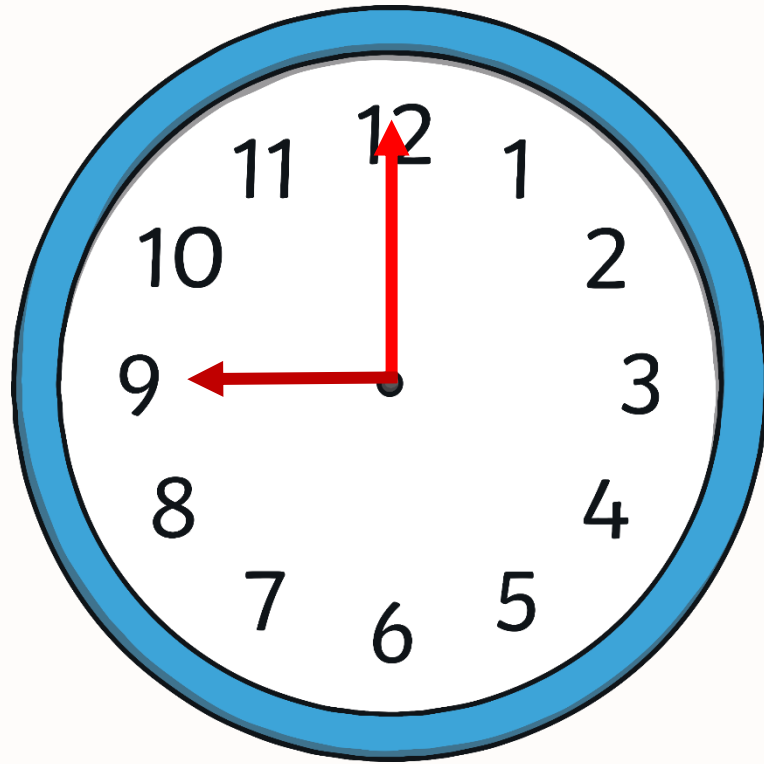
What Time Is It?



What Time Is It?

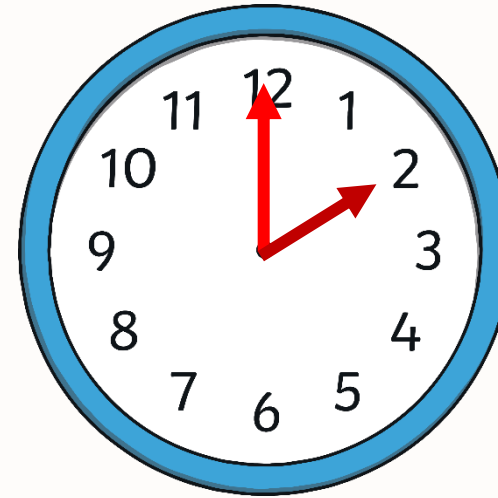
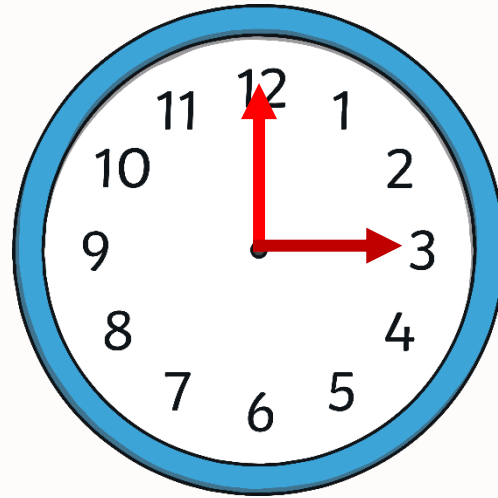
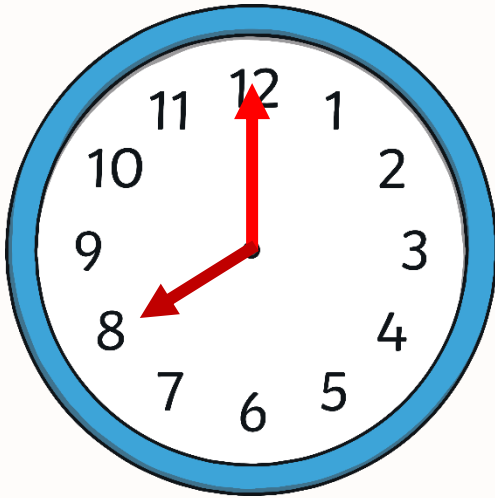


What Time Is It?



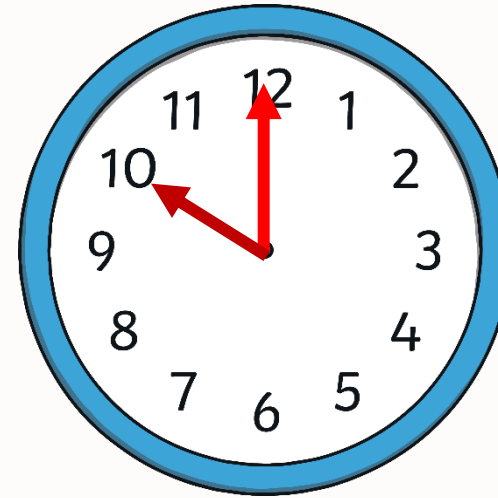
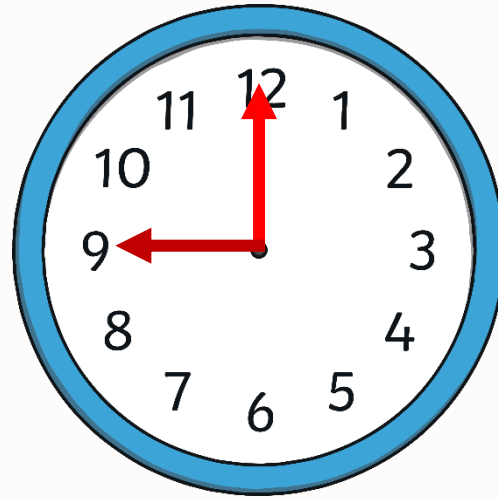
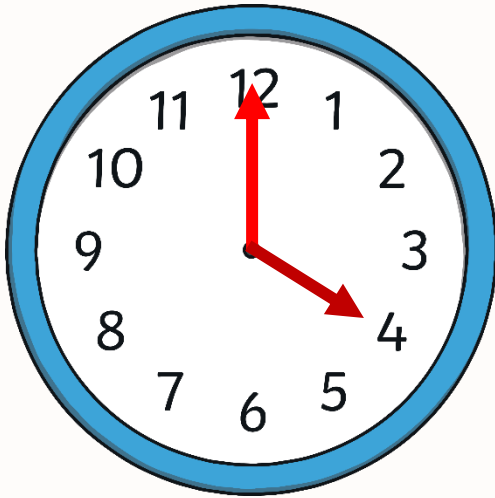
What Time Is It?

Which clock shows 2 o'clock?



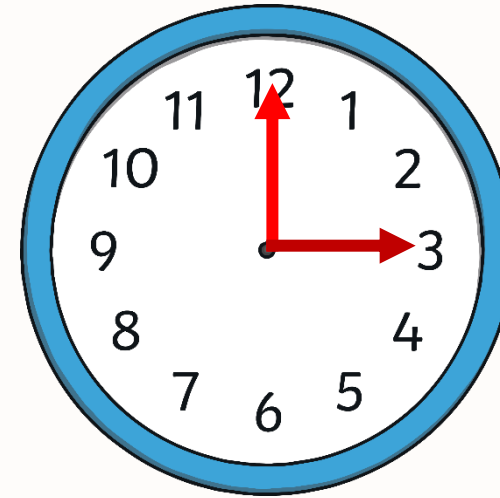
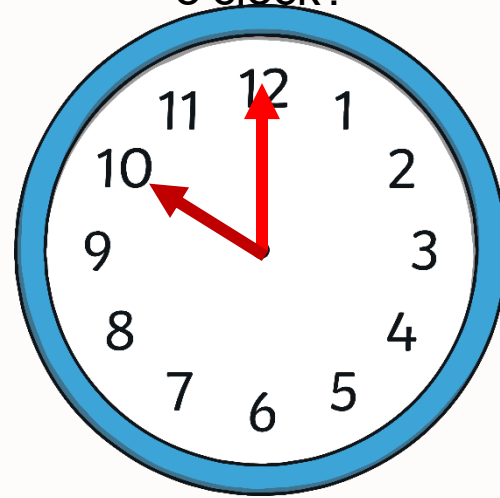
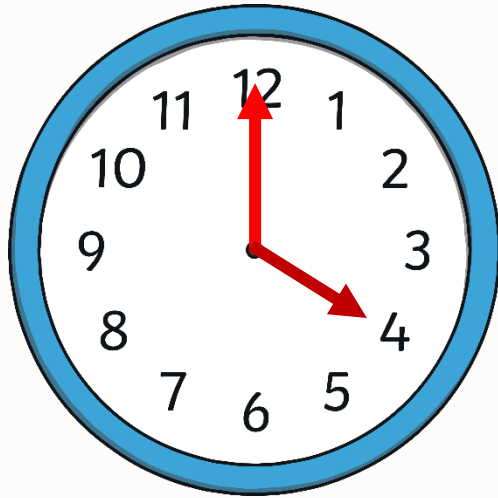
What Time Is It?

Which clock shows 4 o'clock?



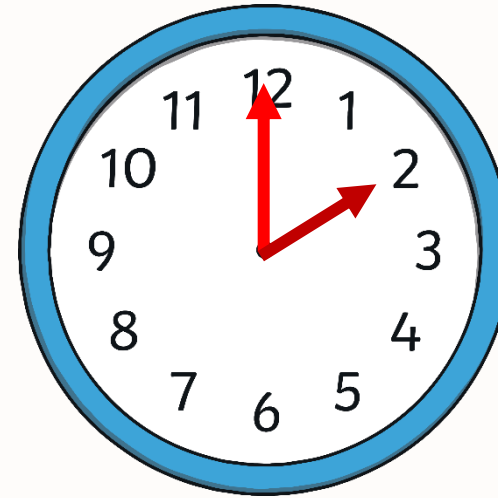
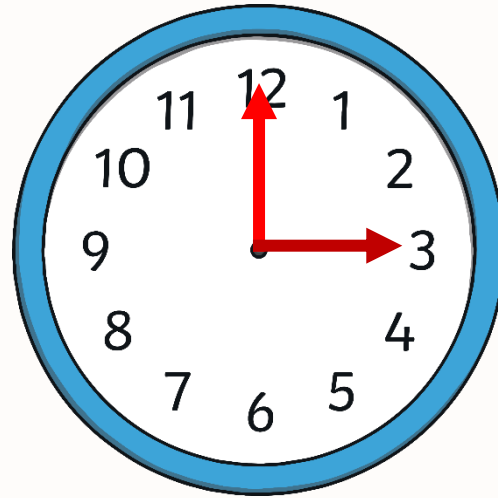
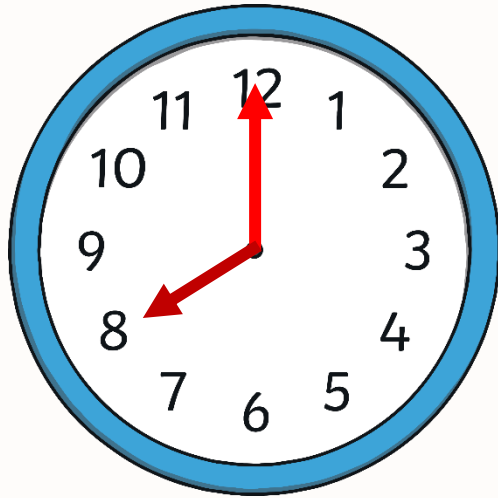
What Time Is It?

Which clock shows 10 o'clock?



What Time Is It?

Which clock shows 3 o'clock?



Telling the Time:



Questions

How many seconds are there in a minute?

60

How many minutes are there in a hour?

60

How many minutes are there in half an hour?

30

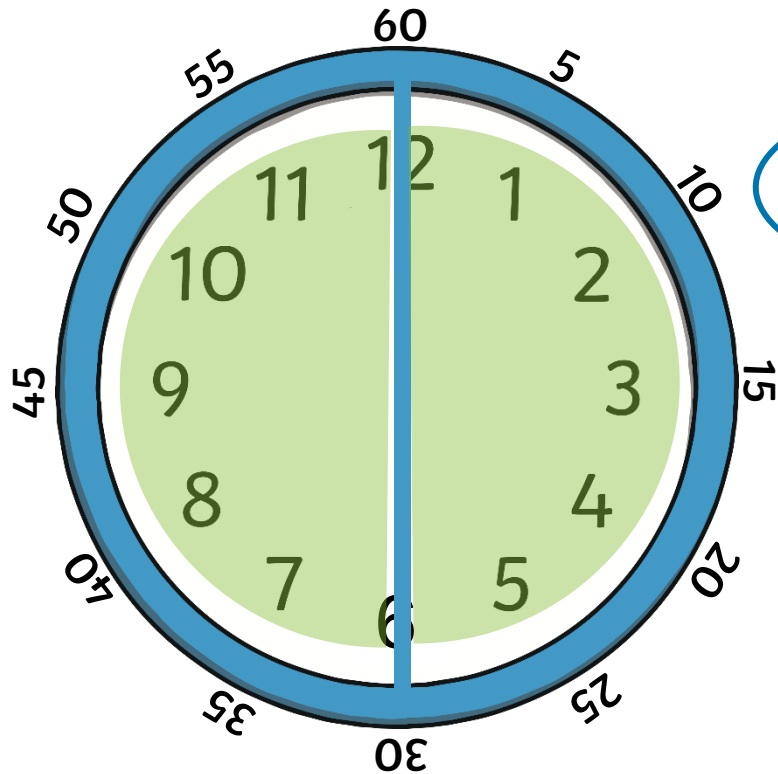
How many days are there in a month?

28-31

How many days are there in a year?

365

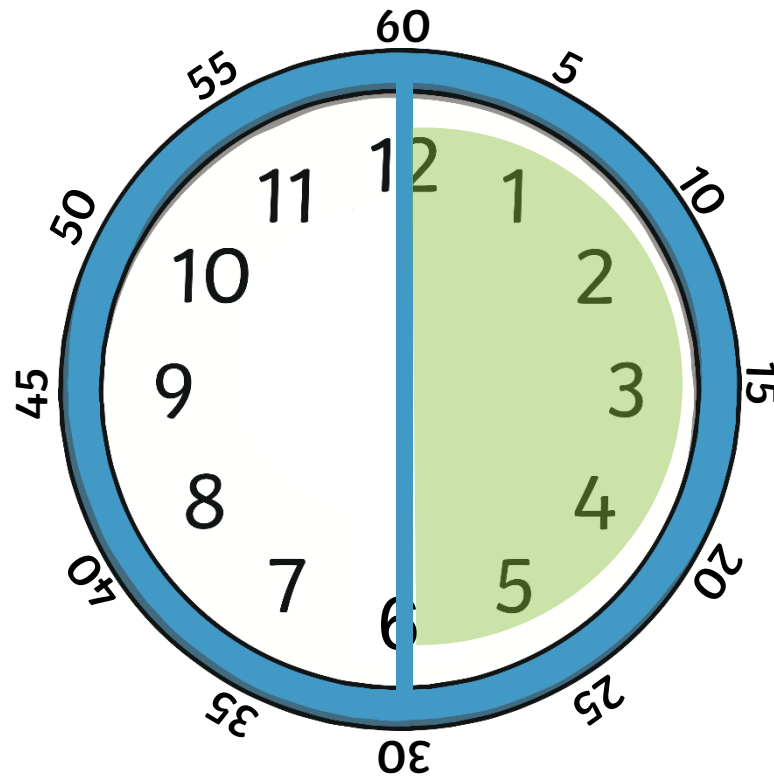
A clock face is a full circle
which is made up of 2 halves.



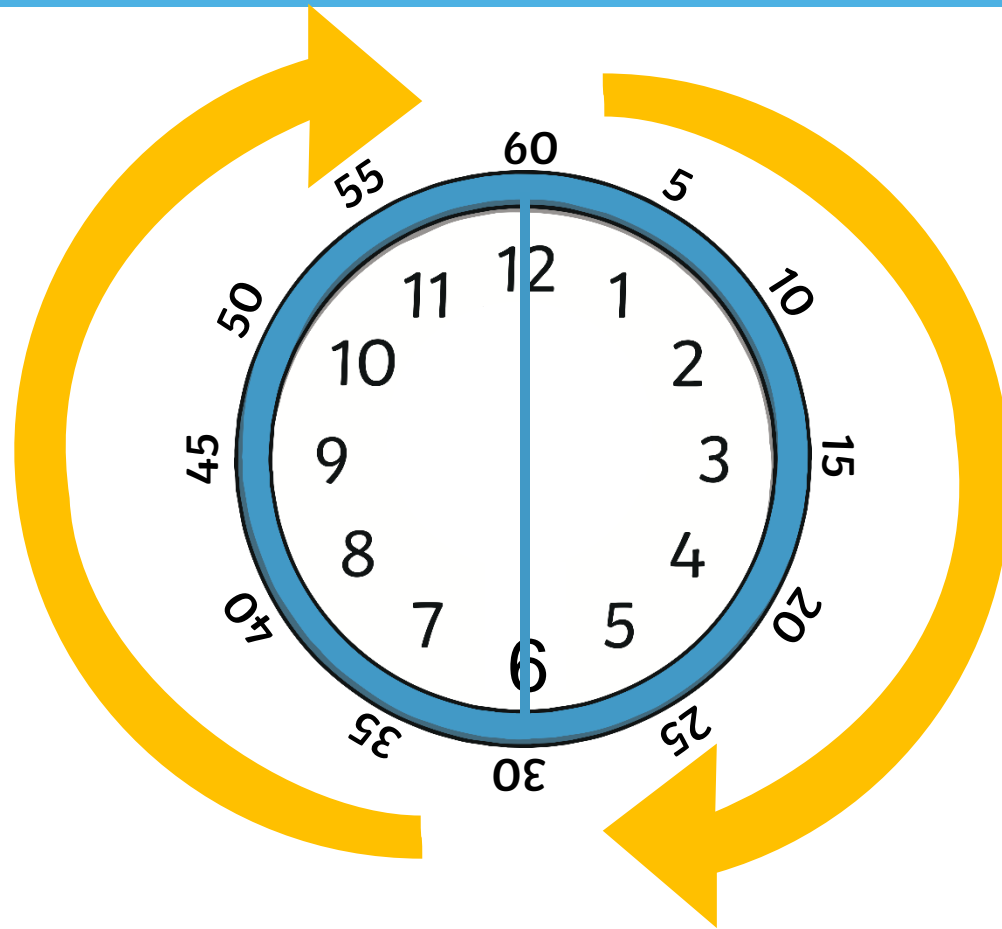
How many
minutes make up
half of an hour?



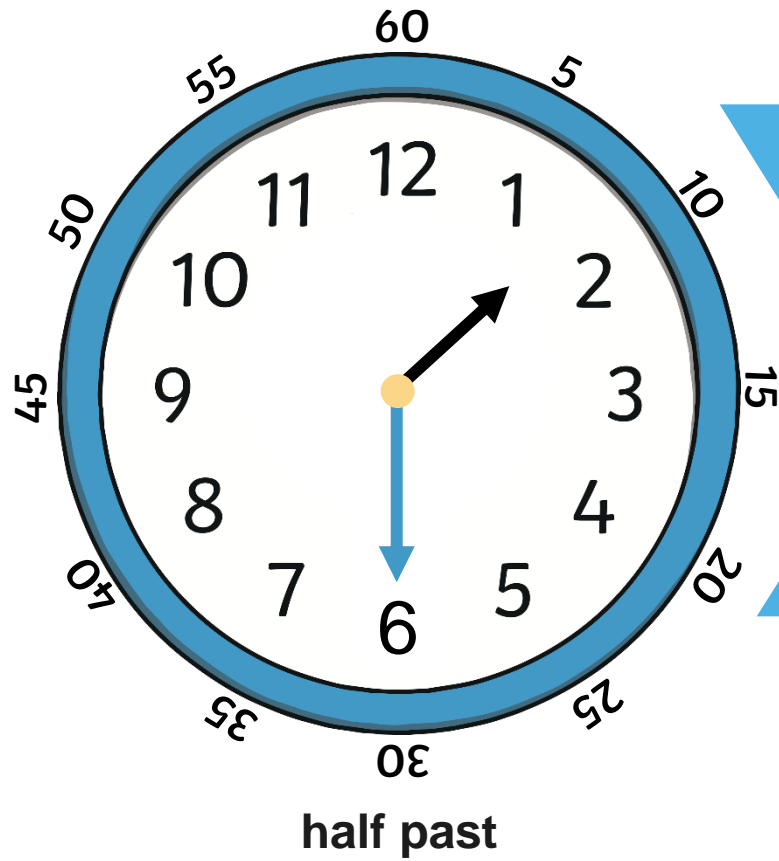
There are 30 minutes in half of an hour.



When it is 30 minutes past the hour we say 'half past' the hour.



Look at this time.

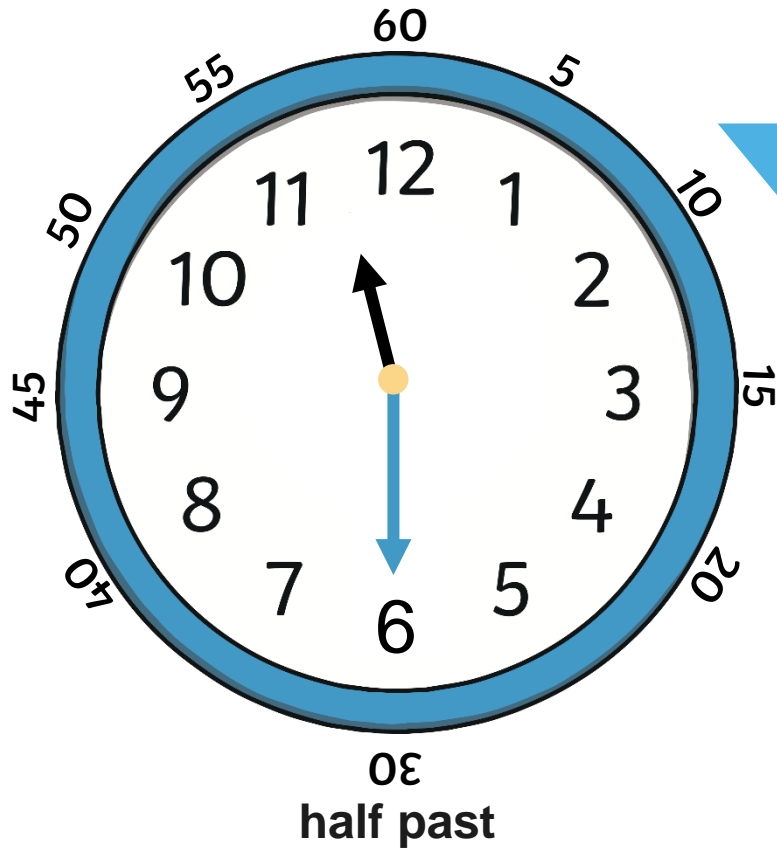


The big hand is pointing at 6, which is halfway around the clock.

Where is the small hand pointing?
Is it on the number?

It's half way between 1 and 2.

What time is this clock showing?



Where is the **big hand** pointing?

6

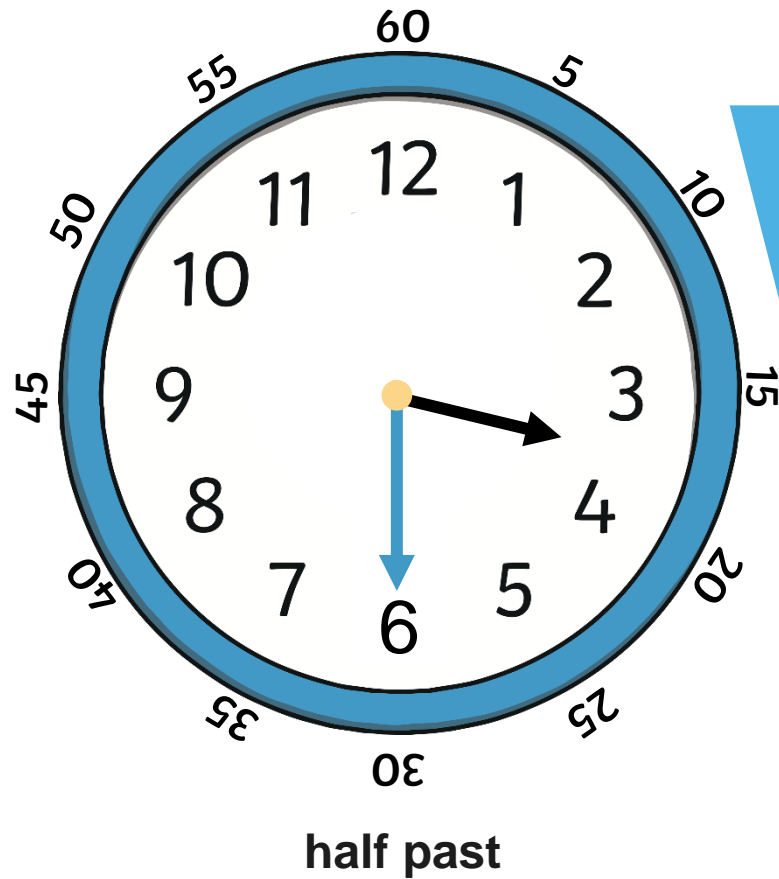
Where is the **little hand** pointing?

halfway
between 11
and 12

It's half past 11.



What time is this clock showing?



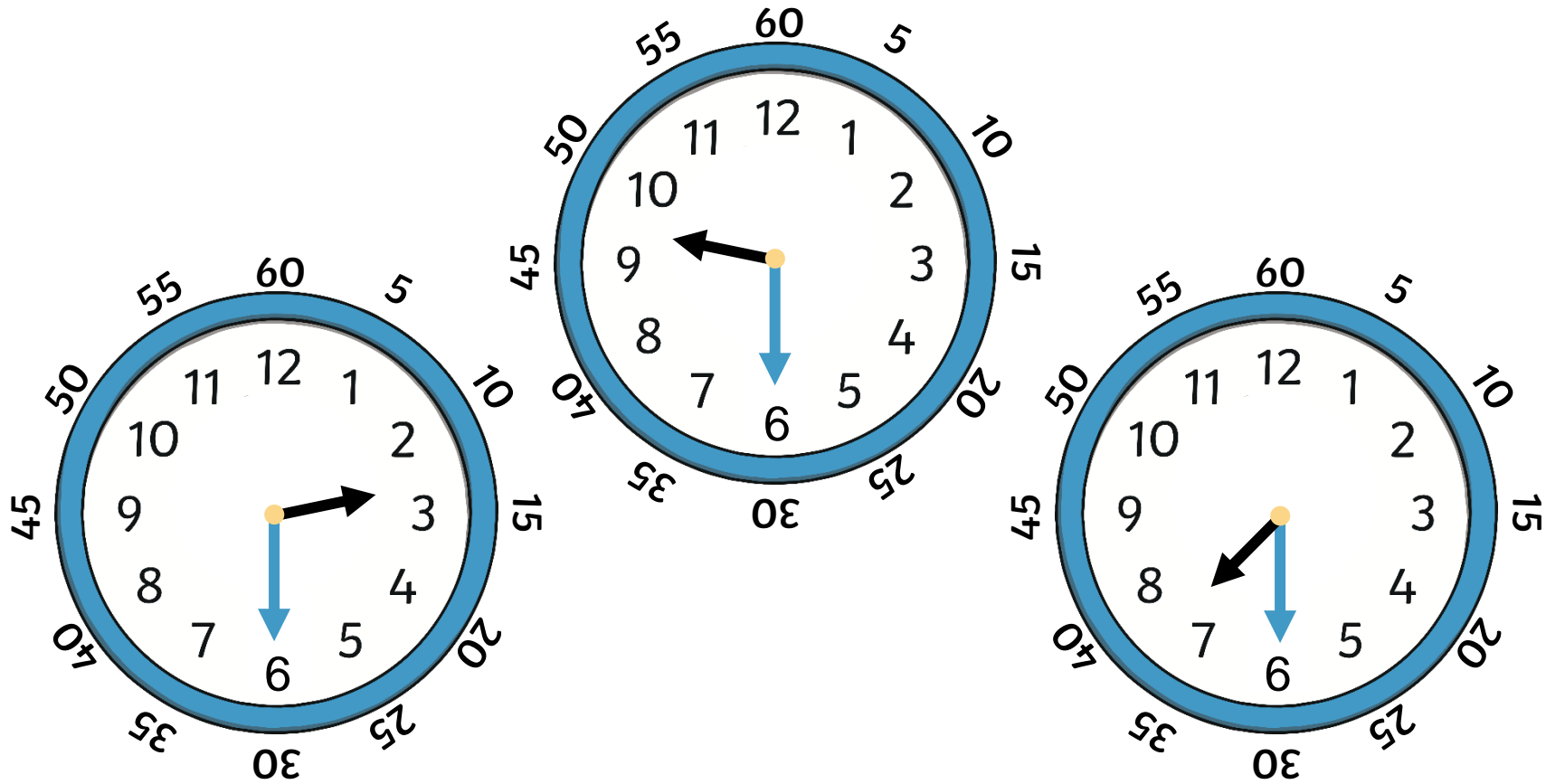
What do you notice about the small hand?

It is halfway between 3 and 4.

It's half past 3.



Which clock
is showing
half past
2?



Tell the Time: Writing the Time

Write the time shown on each clock.



___ o'clock



___ o'clock



___ o'clock



___ o'clock



___ o'clock



___ o'clock



___ o'clock



___ o'clock

Tell the Time: Drawing the Time

Draw the time on each clock.



5 o'clock



11 o'clock



4 o'clock



9 o'clock



1 o'clock



10 o'clock



2 o'clock

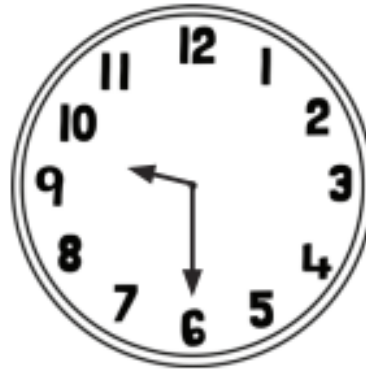


6 o'clock

Tell the Time: Writing the Time

Write the time shown on each clock.











Tell the Time: Drawing the Time

Draw the time on each clock.



9 o'clock



half past 3



5 o'clock



1 o'clock



half past 7



half past 8



10 o'clock



half past 12