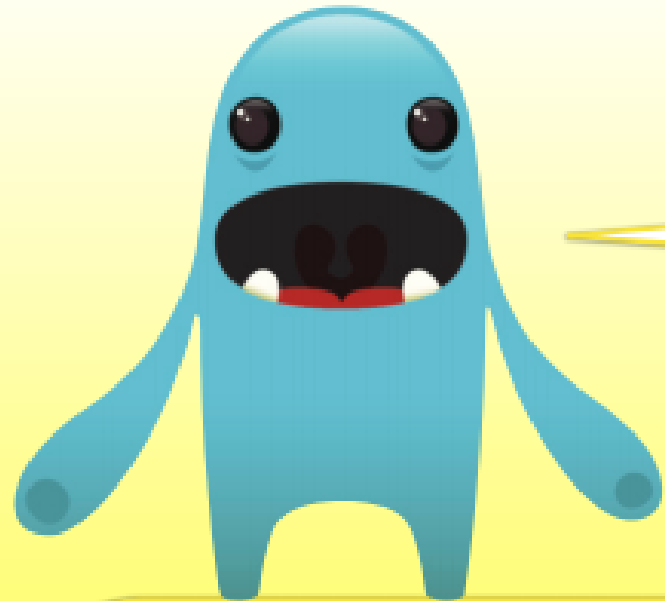


Where do I live?

Today we will be...

Exploring the town we live in.



Which country do we live in?

Which town do we live in?



This map shows some of the major cities in the UK.

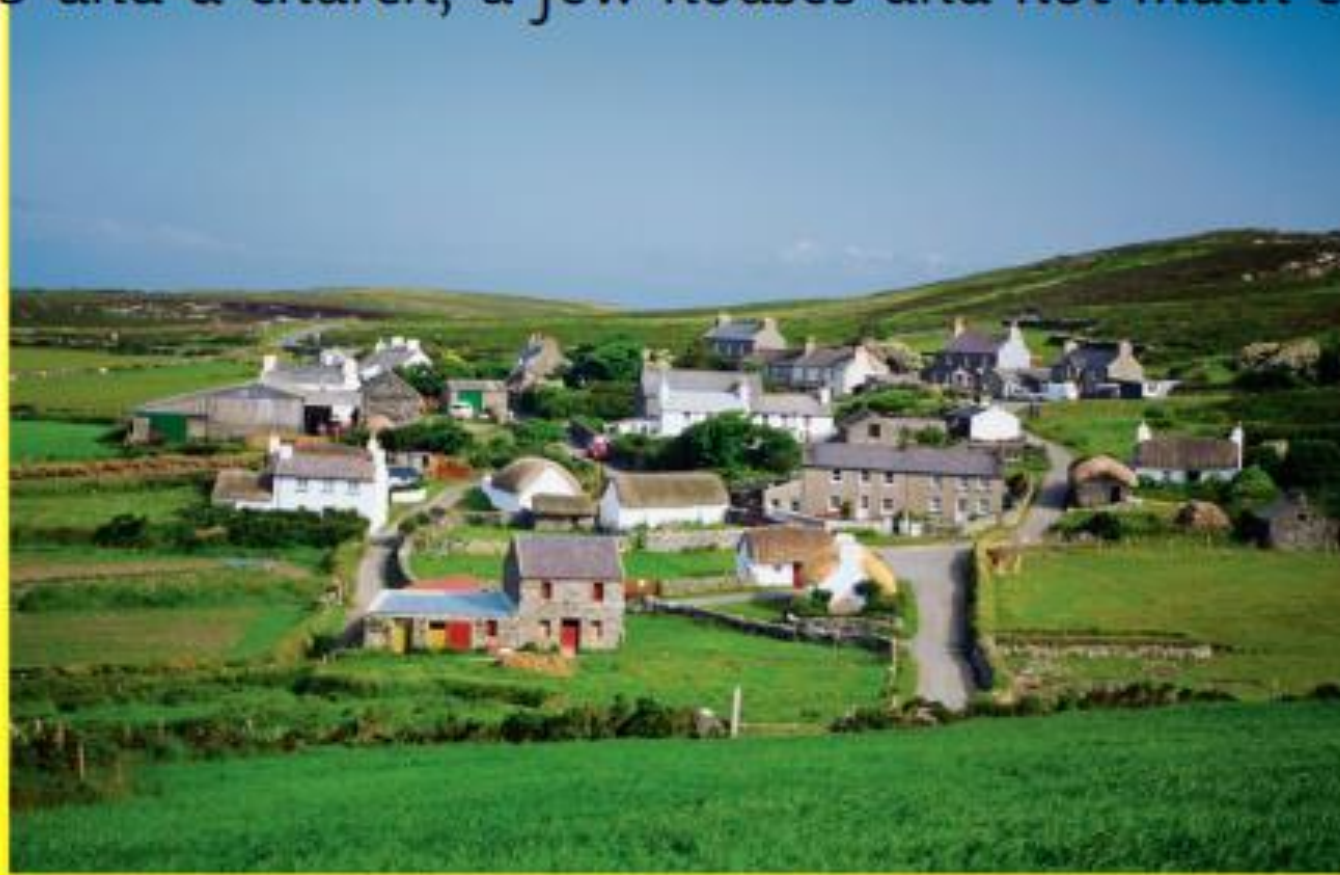


Where do we live on this map?

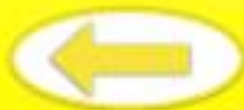
What cities are we near?



A settlement is an area where people live. There are many different types of settlements in the UK. Some people live in tiny hamlets or small villages that have only a few houses. A village will sometimes have a small shop, a pub and a church, a few houses and not much else.



A town is bigger than a village. Towns will have lots of houses, shops, banks, restaurants and other facilities.



A city is the biggest type of settlement. Cities often have the same type of facilities as a town but they are bigger. Many cities in the UK have a cathedral.



Quiet villages and small towns that are in the countryside are known as **rural** areas. Rural areas have lots of fields for farming.



Busy towns and cities are known as **urban** areas. Urban areas are areas that have been built up with roads and buildings instead.



Do we live in a quiet rural area or a busy urban area?
How would you describe the area we live in?

