

Dear Year 6, I hope you enjoyed last week's activities and are keeping busy! Last week you found out about how the Shang dynasty ended after lasting for over 500 years. This week I have included some learning tasks which investigate Shang artefacts.

The Shang Dynasty - Examining Artefacts

Using the photo pack resource found on pages 3-9, can you look at the pictures which include a range of artefacts from the time of the Shang dynasty - you may recognise the dǐng from 'Home Learning Week 3'.

- What are the objects and what do you think they were used for?
- Who do you think would have made the object and how?
- Who do you think would have used the object?
- What is the object made of?

After completing your research, read the 'Shang Craftsmen Information Sheet' (page 10). Can you create a comic strip or instruction guide to describe the process of making an object out of one of the materials?

Maths – Ratio & Proportion

Revisit the following strands:

- What is ratio?
- Solving ratio problems
- What is proportion?
- Solving problems involving proportion
- Scaling up and scaling down problems

The School Run website includes some helpful information:

<https://www.theschoolrun.com/what-is-ratio>

<https://www.theschoolrun.com/what-is-proportion>

Reading

- Continue to update your reading record
- This week's reading tasks will focus on vocabulary. Can you find any words within your book/chapter that are unfamiliar? Find the definition of these words in a dictionary and include them in independent sentences
- Have you used the words correctly in the context of your sentence?

Art & Design

Choose one of the Shang artefacts you have been learning about to research in more detail. Design and create a poster about the artefact including as much detail as you can. You can include drawings, diagrams, maps or any other information you think is appropriate.

Ideas for information to include:

- Dates
- Where the artefact was found
- Where the artefact is now
- What the artefact is called
- What the artefact was used for
- Who would have used the artefact?
- What the artefact is made of
- What the artefact can teach us about Shang culture
- Other examples of the same type of artefact
- Key facts/measurements etc.





Statue Pendant

Made from Jade



Shang Dagger Blade
Made from bronze



Jue

Made from bronze



Ding
Made from bronze



Zun
Made from bronze



Turtle with Arrows
Made from bronze



King Cancong Mask
Made from bronze

Shang Artefacts

Craftsmen Information

How Shang craftsmen worked with jade:

Firstly chunks of jade were sliced into smaller pieces. Then coarse sand was made into a paste and rubbed over the jade to smooth and shape it. If patterns or other detail was required a rotating tool was used to carve this onto the object. Finally a finer sand was used to polish up the jade object and make it shine.



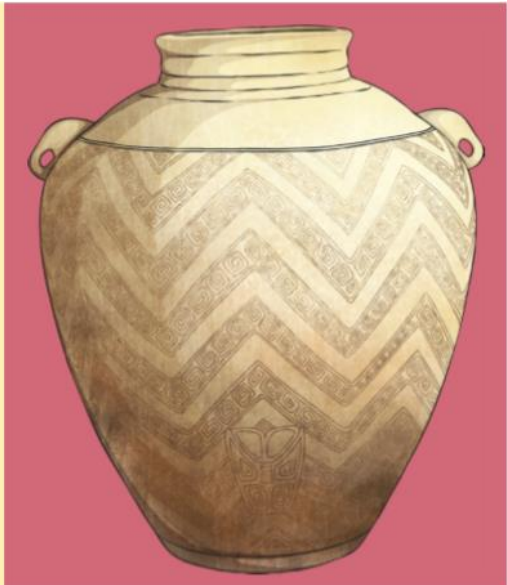
How Shang craftsmen worked with clay:

Clay was rolled out into sausage shapes and then coiled round and round from the bottom up to make the shape of the object required. **or**

Wet clay was placed onto a rotating disc and the potter would quickly work the clay up with his fingers into the shape required. The movement of the spinning disc helped keep the object smooth and regular in shape.

Patterns could be inscribed on to the object if required or extra shapes made of clay could be stuck on to create a raised design.

After the clay object was made it was fired in a kiln (an extremely hot furnace) to dry it and make it go hard. The object could then be glazed or painted once dry.



How Shang craftsmen worked with bronze:

Firstly a model of the item was made out of clay. Patterns were inscribed on to the object if required or extra shapes made of clay could be stuck on to create a raised design.

Next wet clay was pressed all around the model to make a mould, then it was cut into sections and removed. The pieces of the clay mould were then fired in a kiln and put back together.

Molten bronze was then poured into the mould. When it was set the mould was broken away to reveal the bronze item inside.

