

Prime Area of Learning and Development

Personal, Social and Emotional Development

- Establishing routines
- Making relationships, keeping play going
- Sharing
- Emotions

Communication and Language

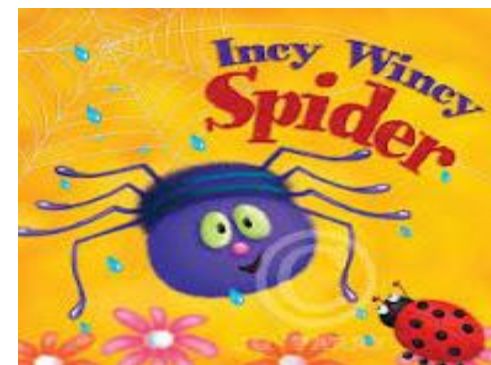
- Helicopter stories
- Following instructions
- Chatterbags (Tell me a story)
- Talking pegs, repeated refrains
- Kim's Game
- Group work for target children (FJ,FW) S&L

Physical Development

- Gross motor skills
- Play dough disco
- Squiggle while you wiggle
- Using the bikes
- P.E. sessions
- Fine motor control - using hand tools, scissors.
- Handwriting skills



Rhythm & Rhyme



Specific Area of Learning and Development

Literacy

- Nursery Rhymes
- Story structure
- Rhyming words
- Odd one out
- Alliteration, I-Spy
- Ring games
- Wordless books (SH)
- Phonics

Maths

- Comparing numbers in a set
- Recognising numerals
- Colours
- Ordering by size
- Positional language
- Shapes
- Counting songs to introduce addition/subtraction

Understanding the World

- Pancake Day
- World Book Day/Library visit
- Easter traditions
- Church visit
- Mother's Day
- Beebots
- Talking pegs
- Forest School

Expressive Arts and Design

- Create props to support role play, i.e. magic wands, pirate hats etc
- Exploring colour mixing
- Musical instruments, exploring sounds, repeated rhythms
- Ring games
- Dance/movement to music

